

COLLEGE OF SOCIAL AND BEHAVIORAL SCIENCES

CALIFORNIA STATE UNIVERSITY, SAN BERNARDINO

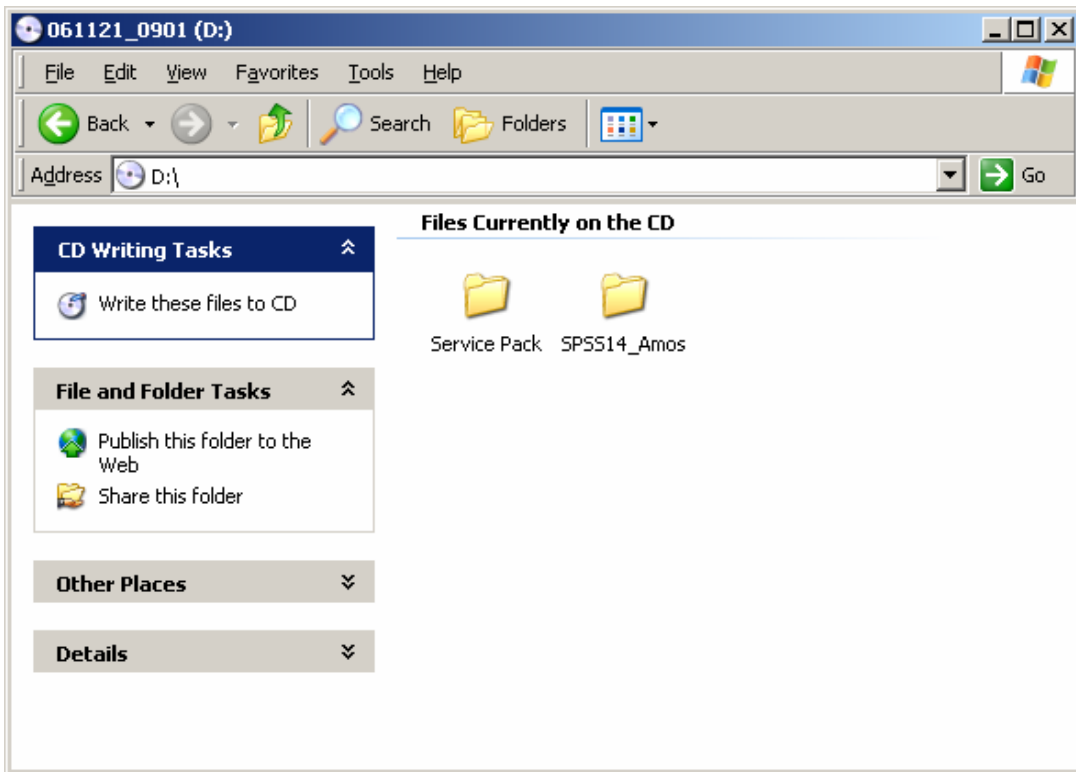
Information Technology Office



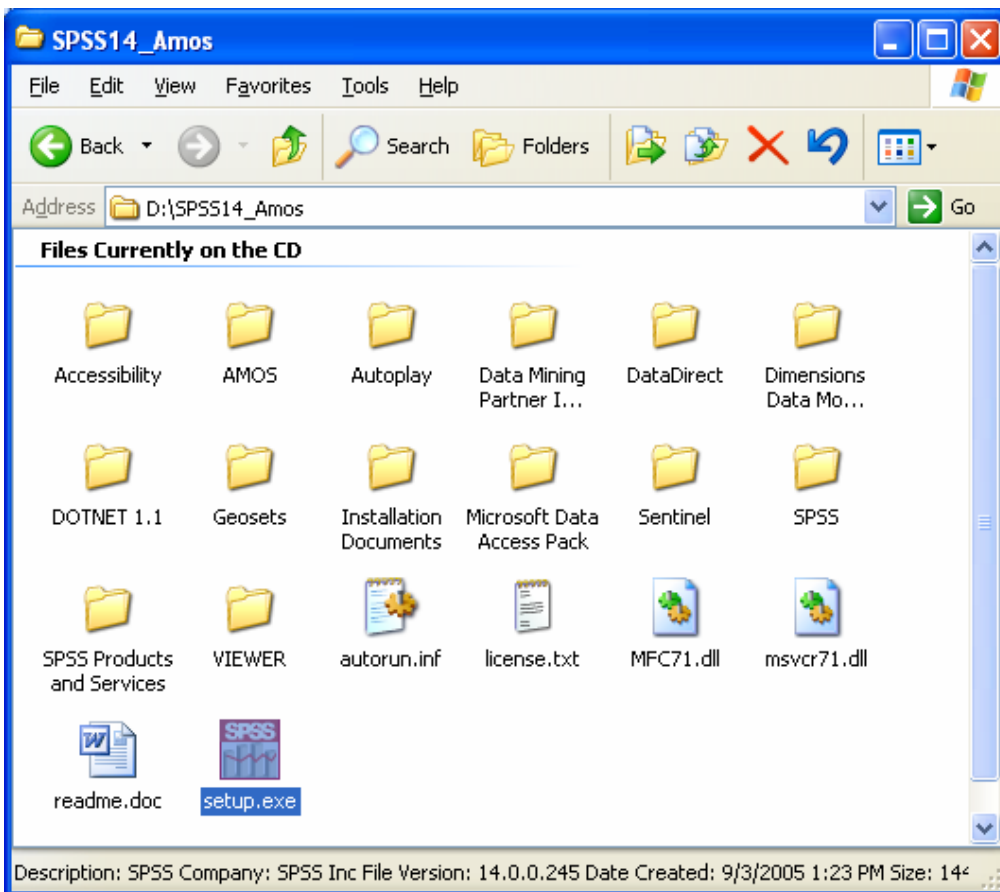
SPSS 14 Install Instructions

SPSS 14 Install Instructions

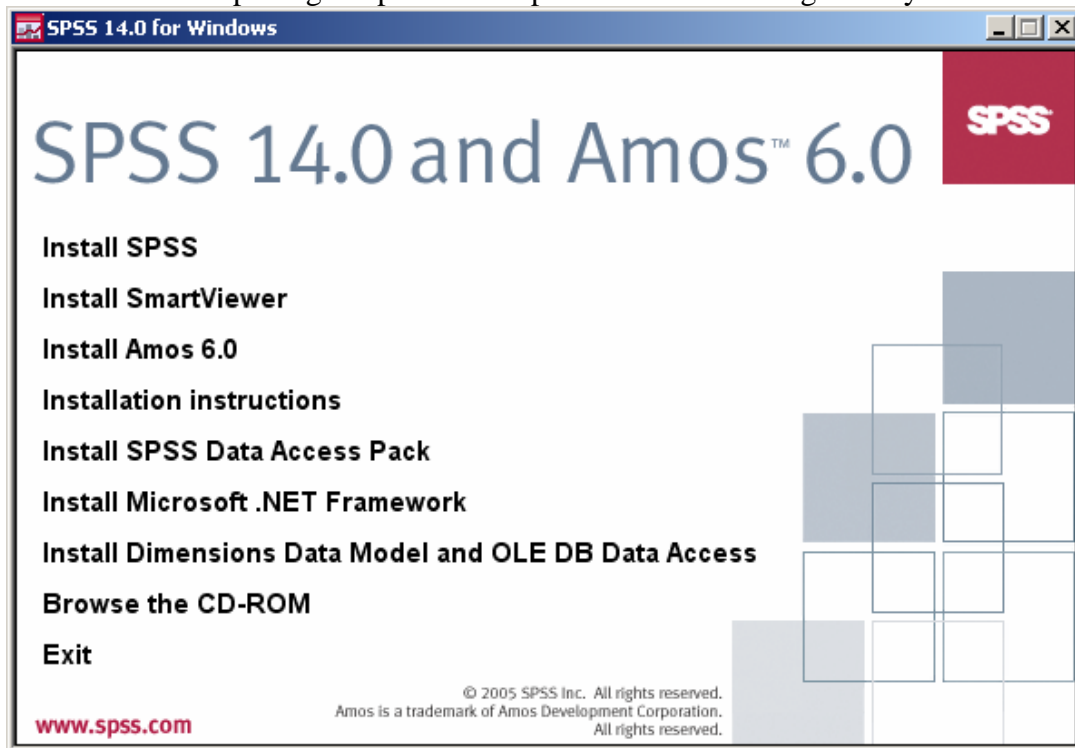
- ❖ The SPSS 14 install disc that you obtained from us should contain the following two folders:
The “**SPSS14_Amos**” folder and the “**Service Pack**” folder.



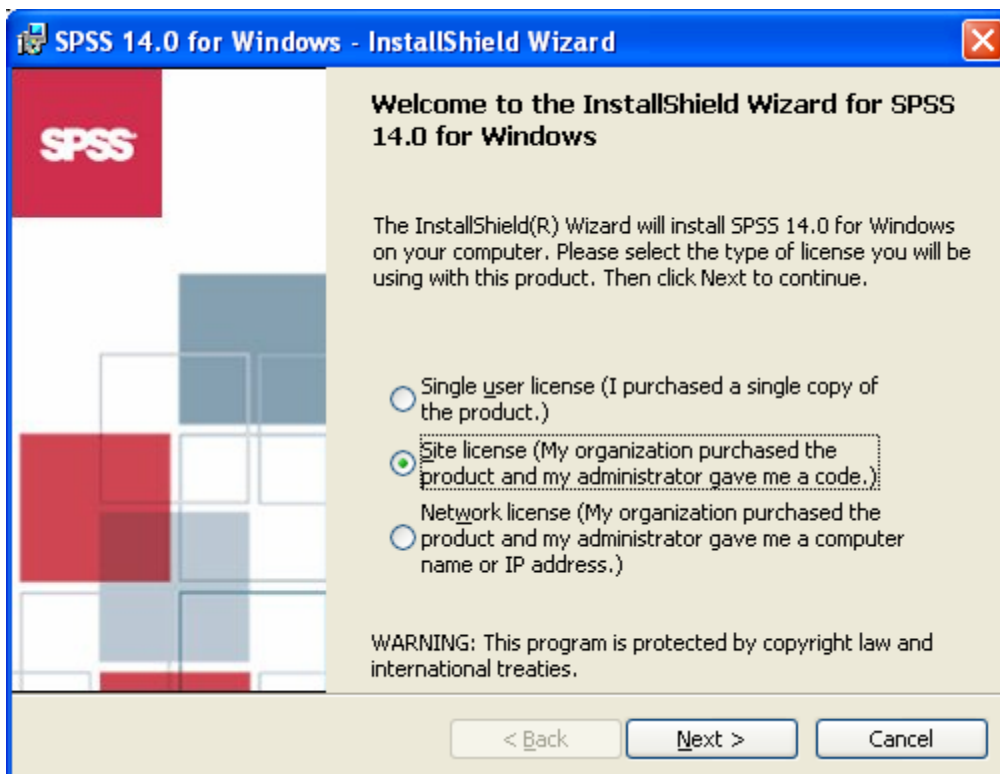
- ❖ Go inside the “**SPSS14_Amos**” folder. Locate and double click the setup icon.



- ❖ After completing the previous step the installer will begin and you will see this screen.

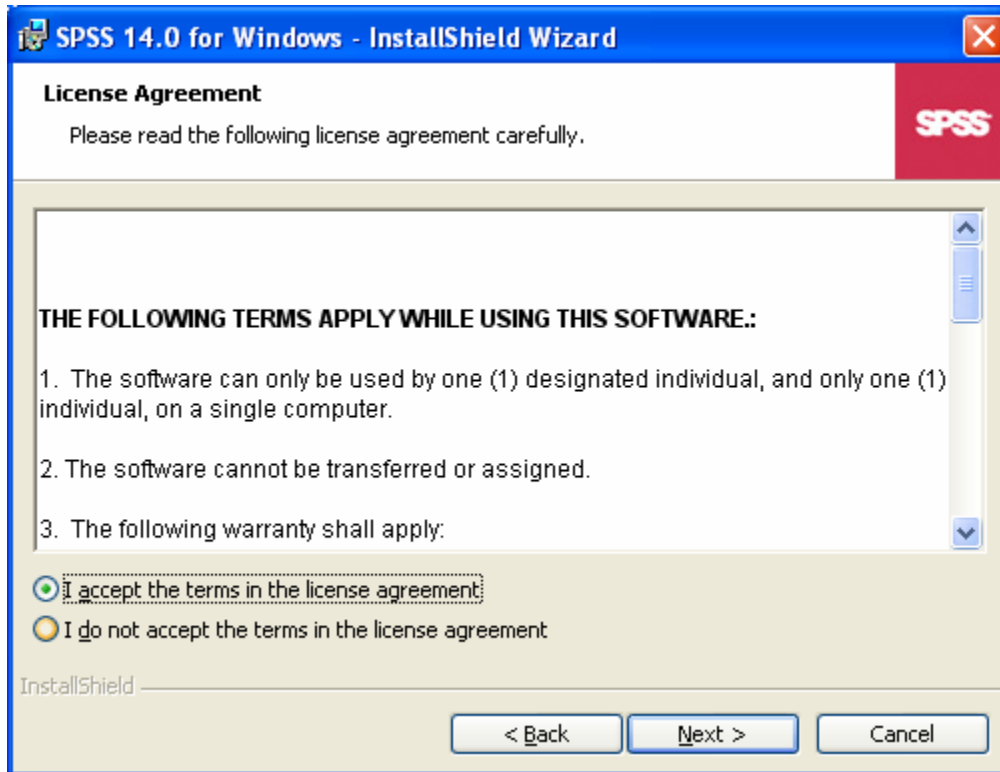


- ❖ Click on “**Install SPSS**,” after about 30 seconds, this menu will appear

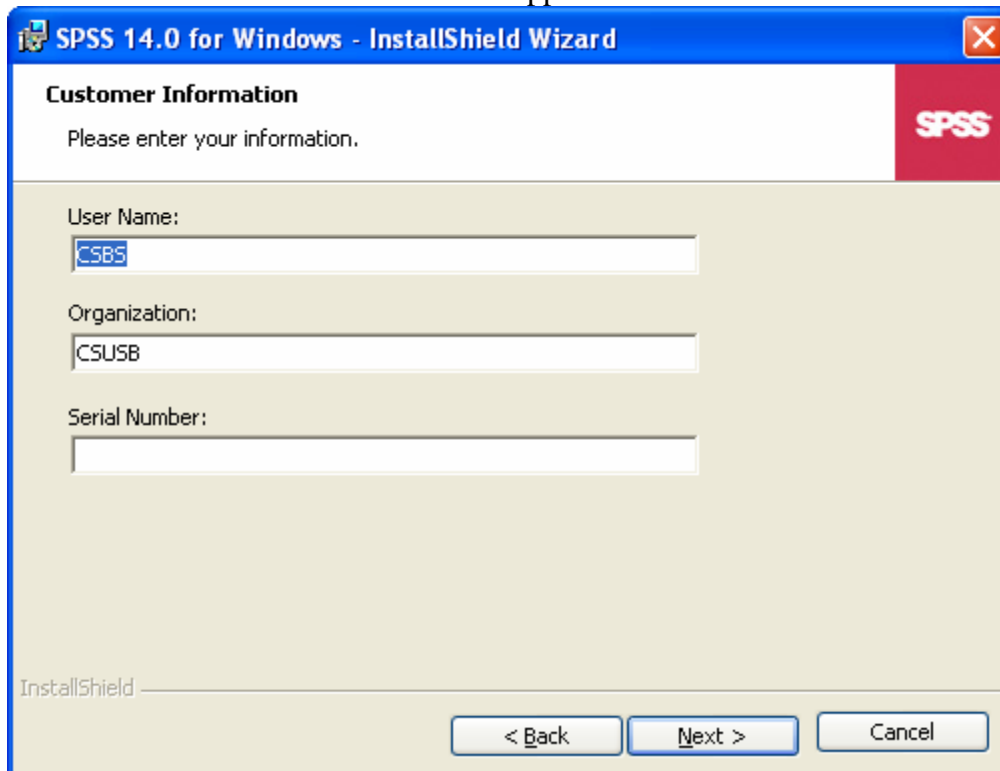


- ❖ Make sure that you have the second option “**Site License**” selected. Click “**Next >**.”

- ❖ Accept the agreement and click “**N**ext >.”



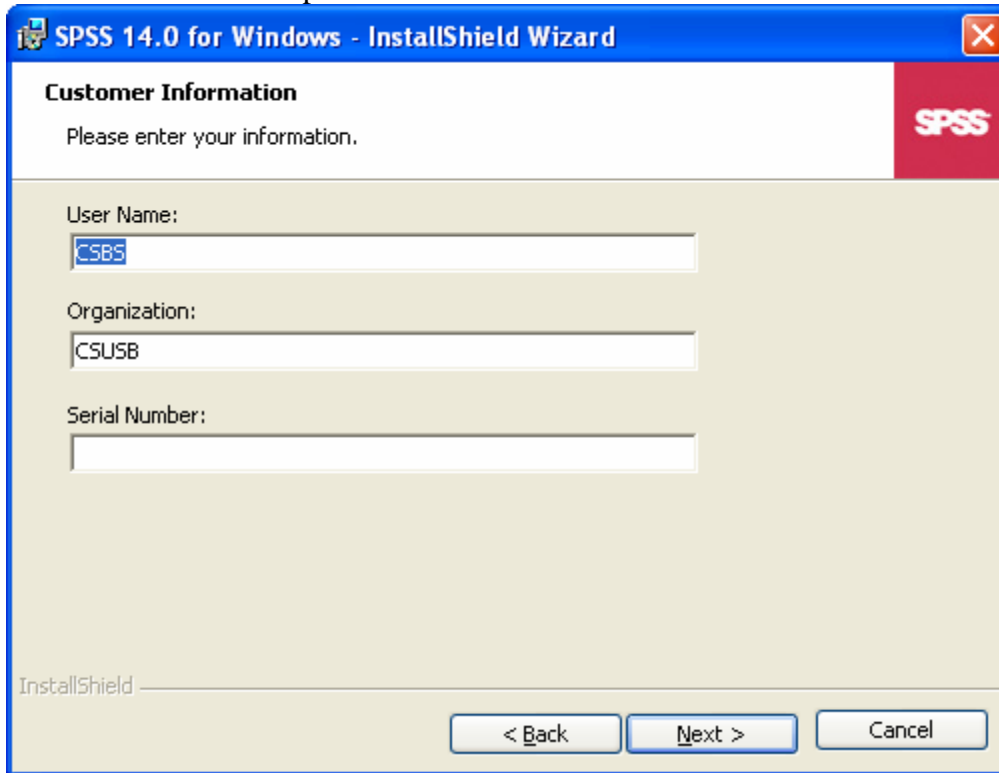
- ❖ Click “**N**ext >” this box should appear on the screen



❖ Type in the provided Serial Number

❖ Use the **Serial/Contract code**

❖ Then go back to the following screen box **SPSS 14.0 for Windows**. It looks like the screen at the bottom and put the **Serial/Contract code** under **Serial Number**:



SPSS 14.0 for Windows - InstallShield Wizard

Customer Information

Please enter your information.

User Name:
CSBS

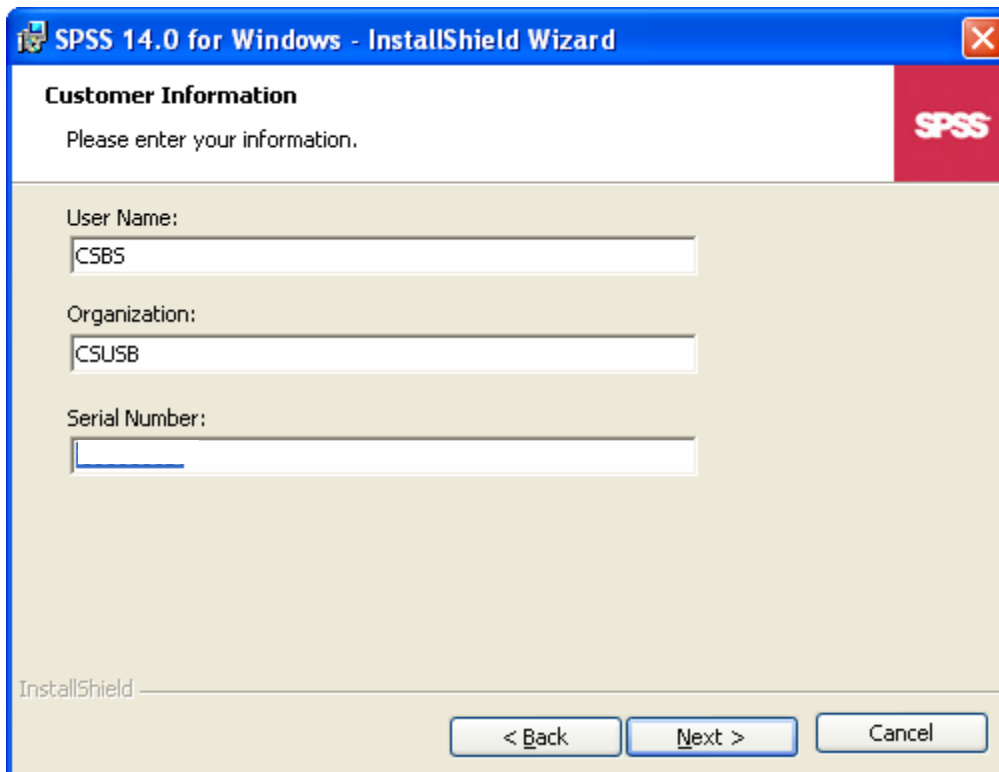
Organization:
CSUSB

Serial Number:

InstallShield

< Back Next > Cancel

It should look like this.



SPSS 14.0 for Windows - InstallShield Wizard

Customer Information

Please enter your information.

User Name:
CSBS

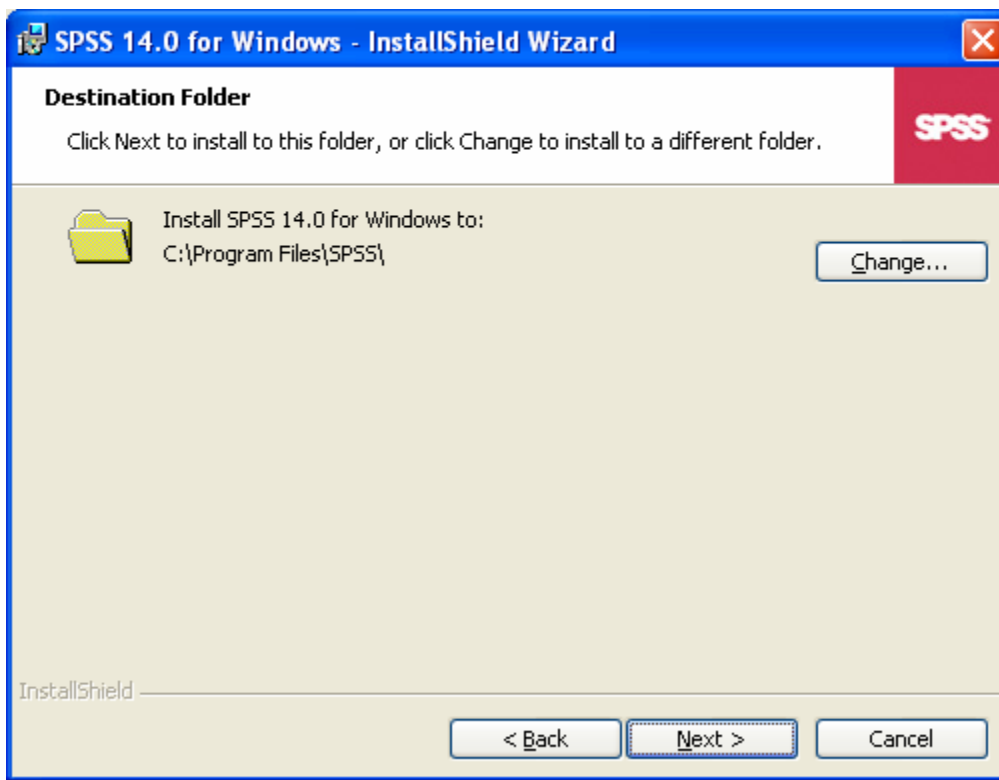
Organization:
CSUSB

Serial Number:

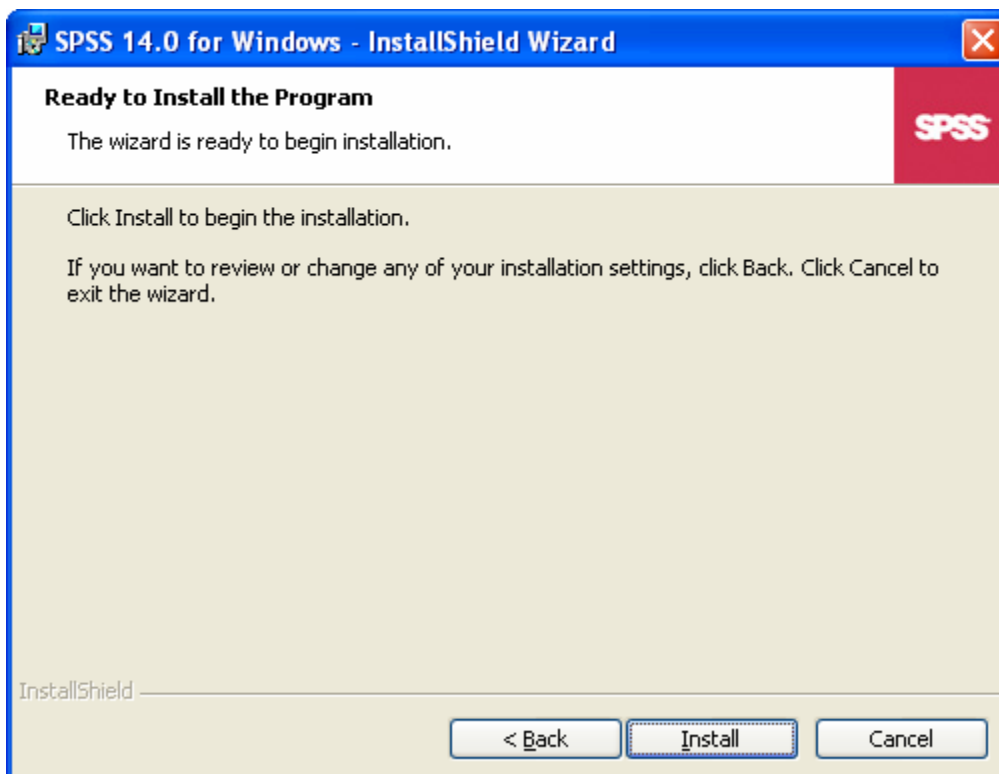
InstallShield

< Back Next > Cancel

Then go ahead and click on “Next>”
This screen box should come up.



Click on “**Next>**”
The screen box at the bottom should come up.

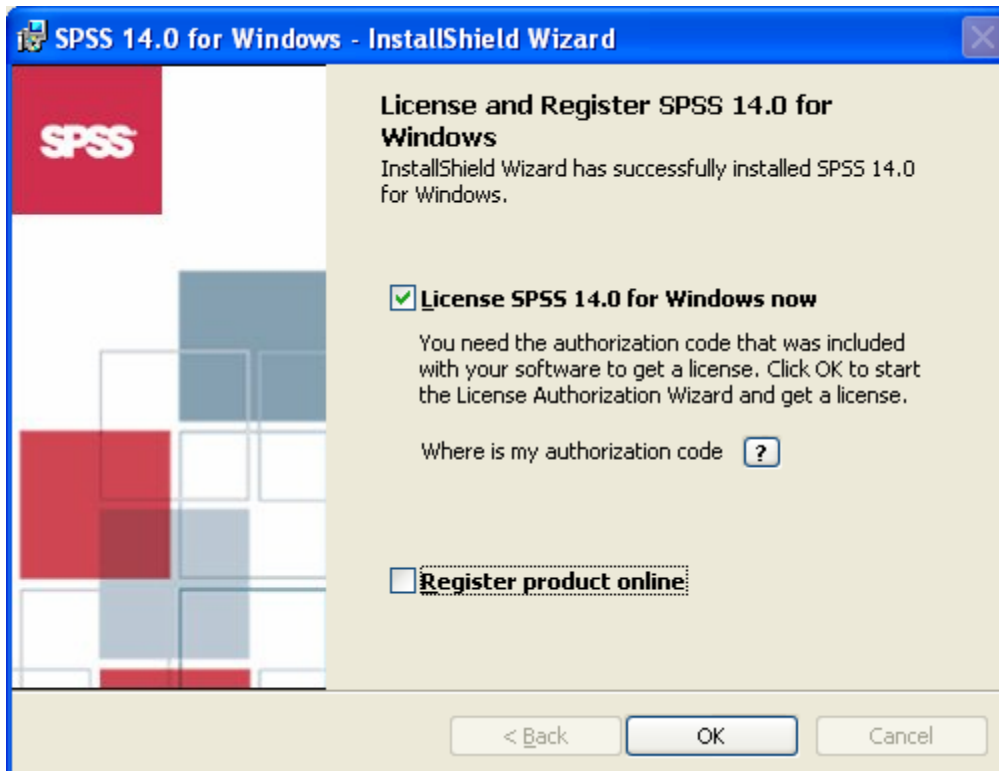


Click on “**Install**”

Depending on the speed of your computer this can take anywhere from 1 ½ minutes to 20 minutes or more.

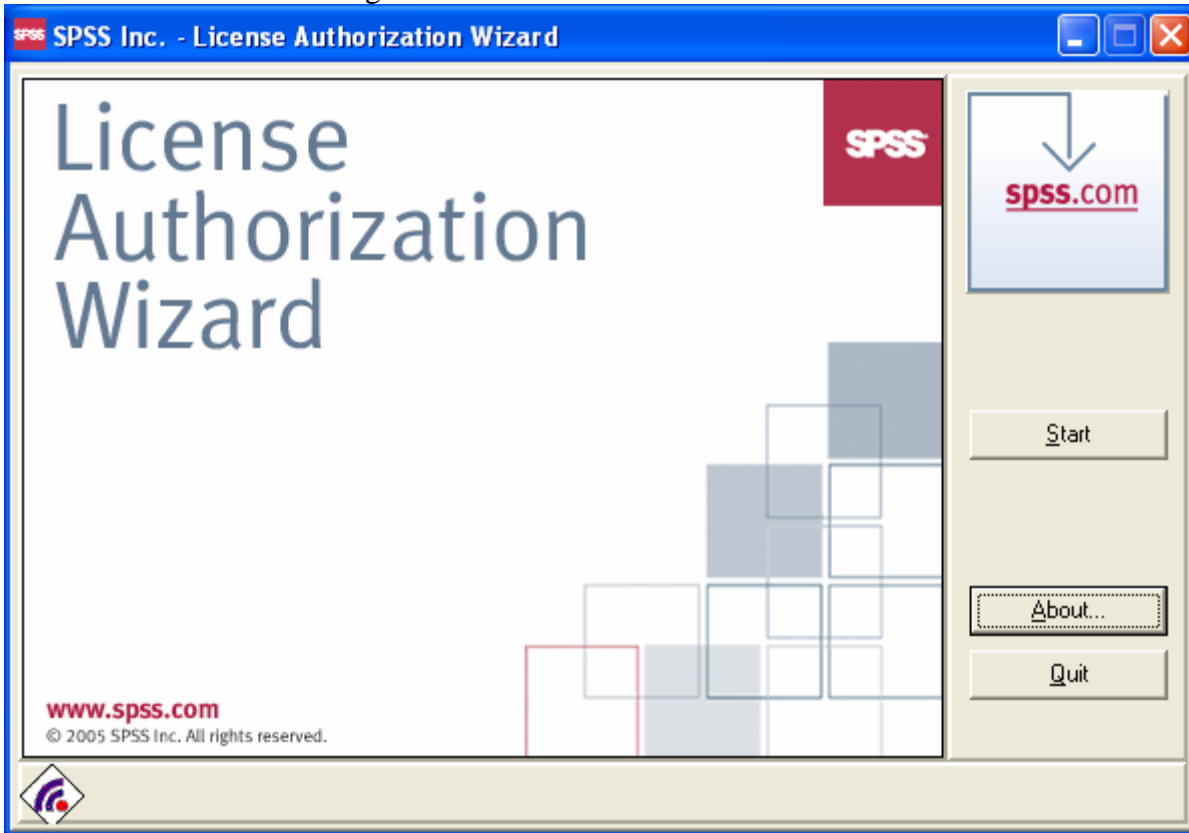


Once the program has finished installing you will see the following box. Please **deselect** the “**Register Product Online**” box.

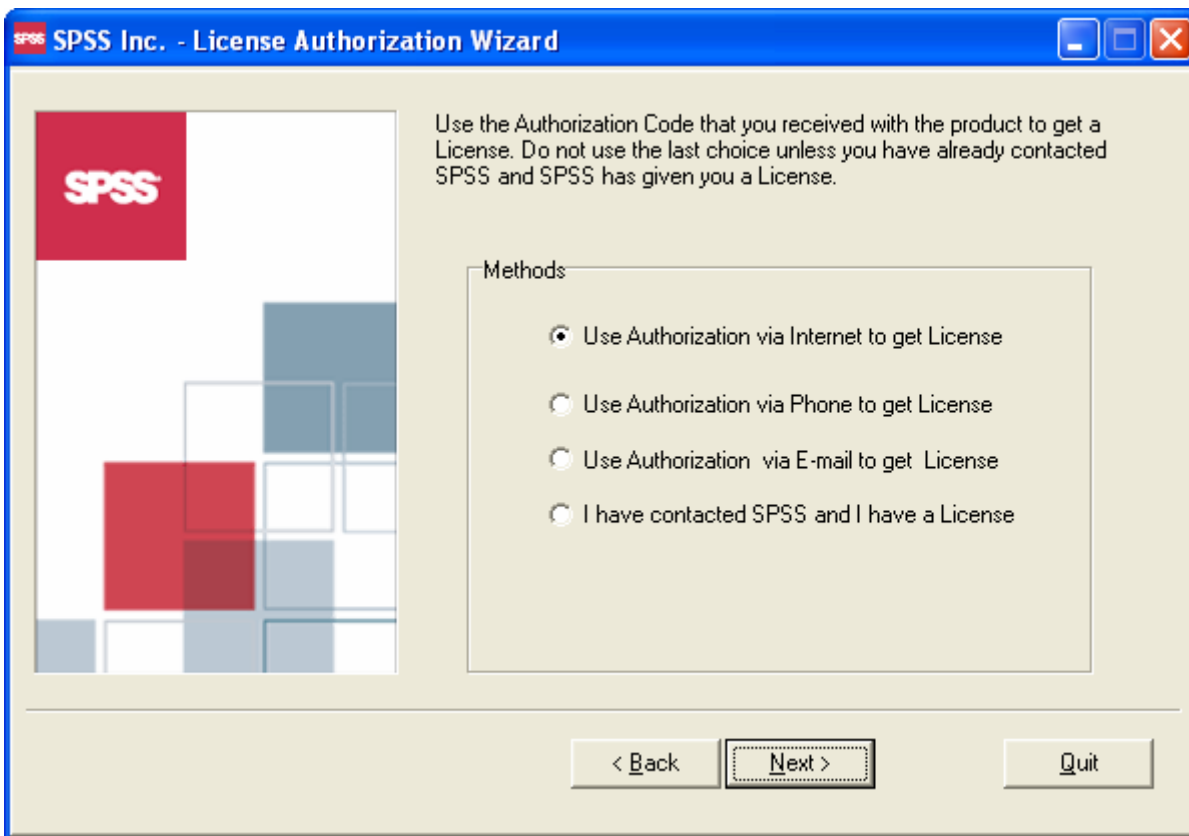


Leave the “**License SPSS 14.0 for Windows now**” box selected and click on **OK**.

You should see the following box

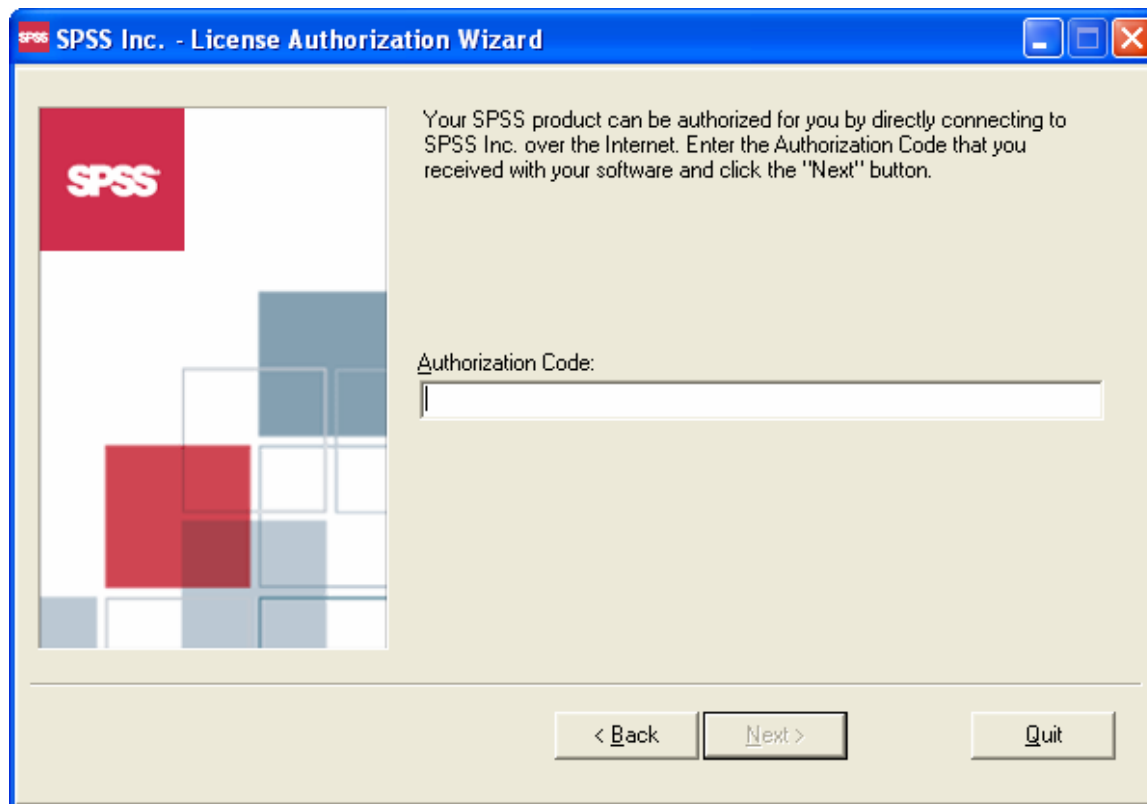


Click on start and you should see the following box

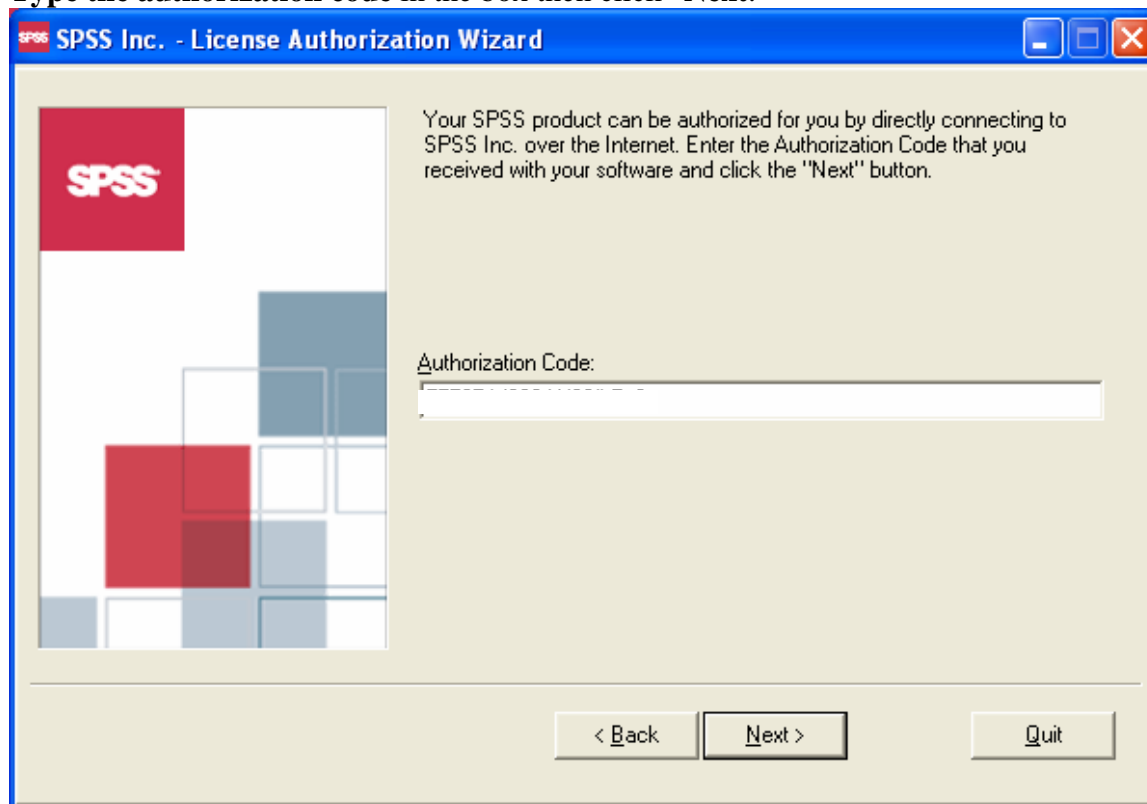


Select the “Use Authorization via Internet to get License” option and click “Next.”

The next box should be the following:

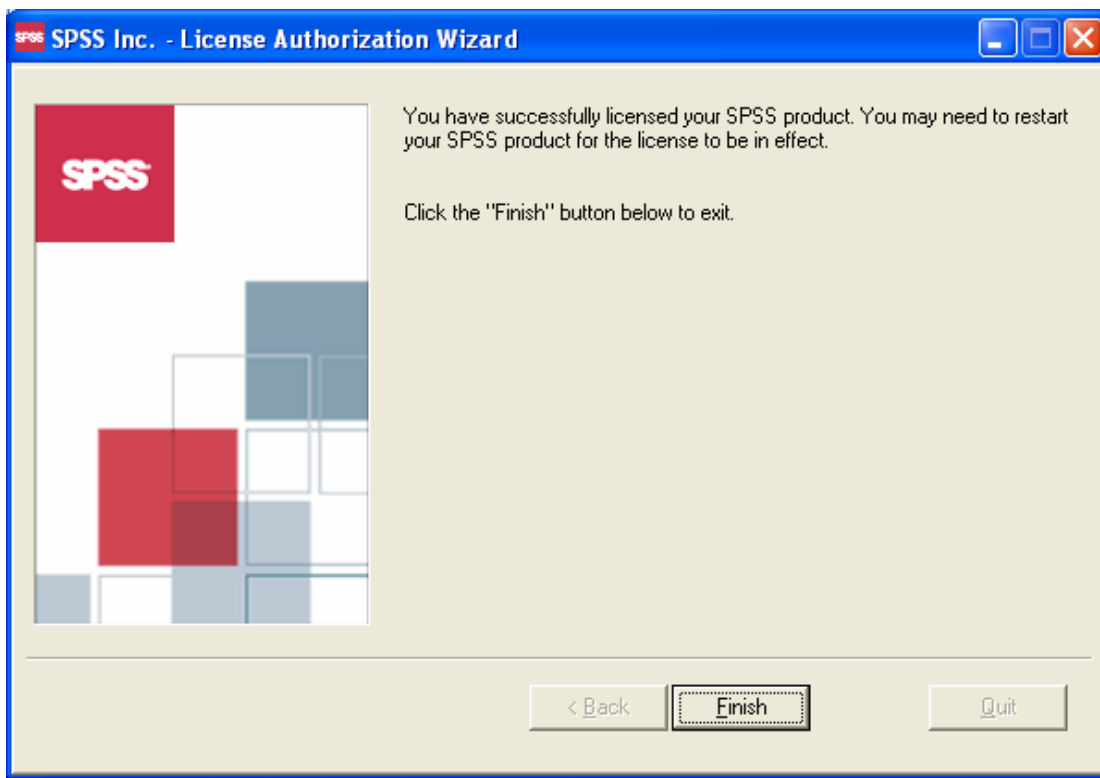


Type the authorization code in the box then click “Next.”



❖ Note this will only work if your computer is connected to the Internet. If you do not complete this step your SPSS program will stop working within a month.

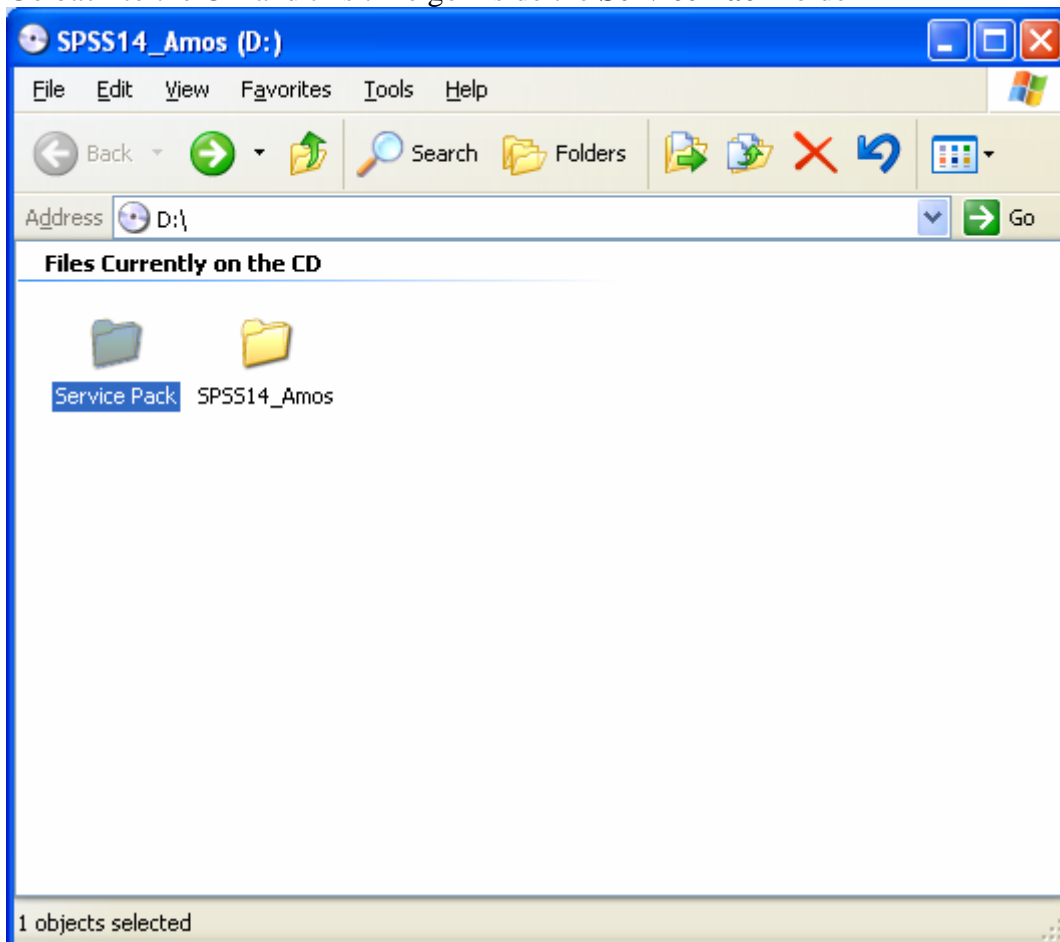
After your SPSS program has successfully been licensed you will see the following box.



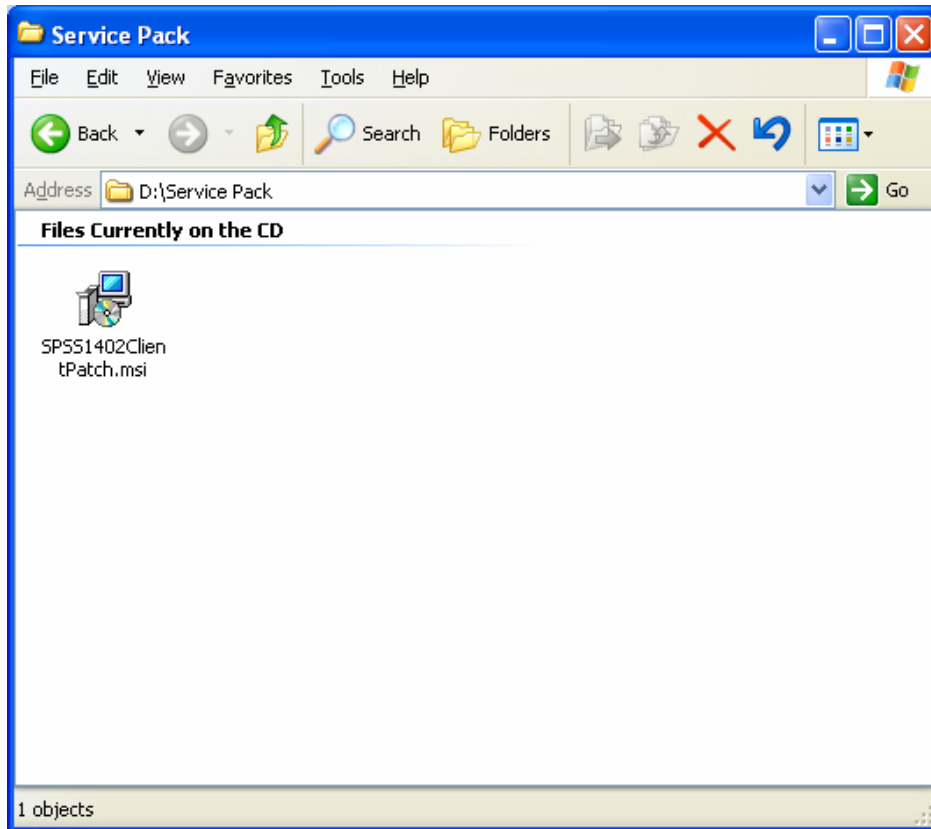
Then click on “**Finish**”.

Applying the Service Pack

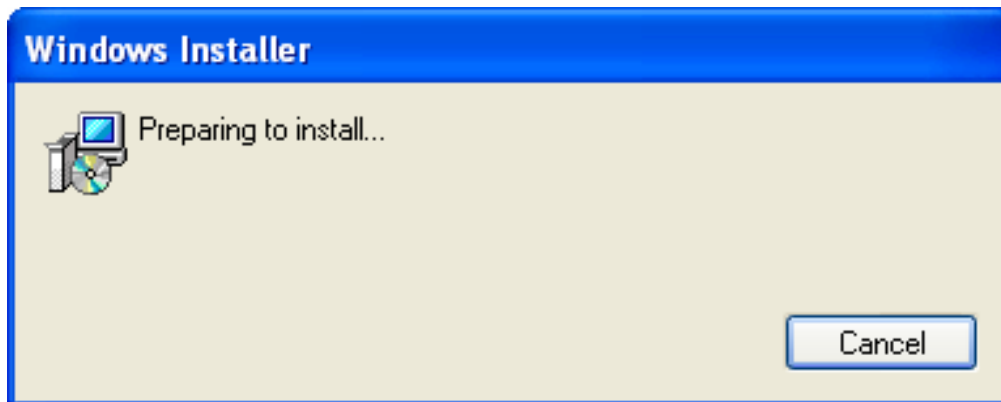
Go back to the CD and this time go inside the **Service Pack** folder



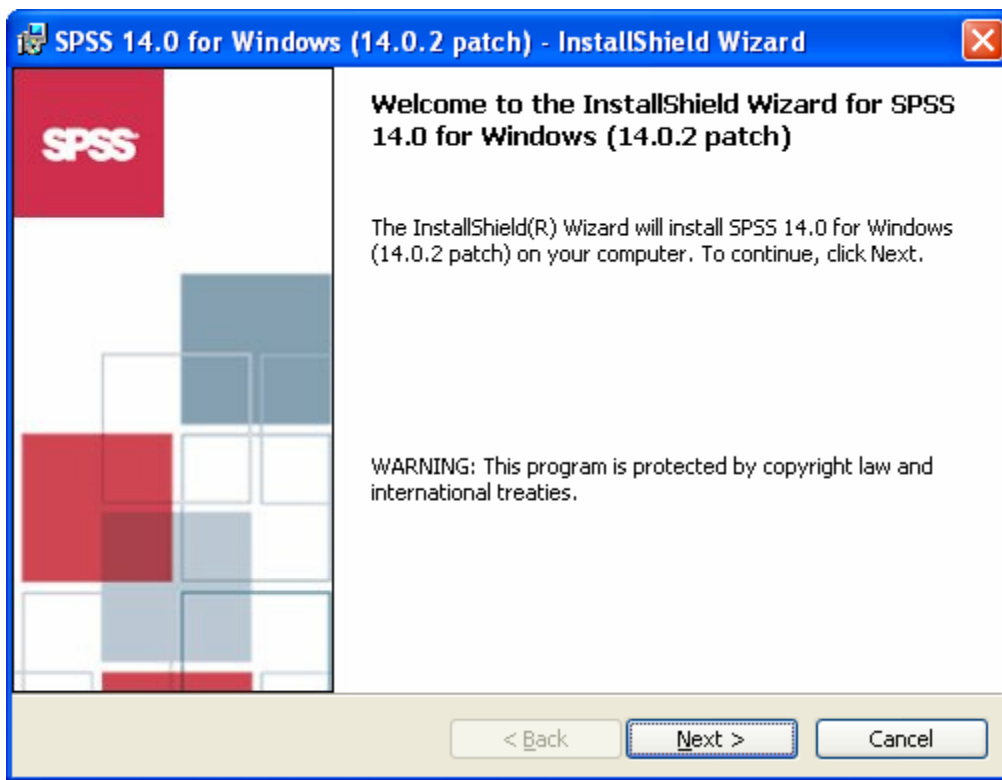
There should only be **ONE** file inside this folder
Go ahead and **double click** on it.



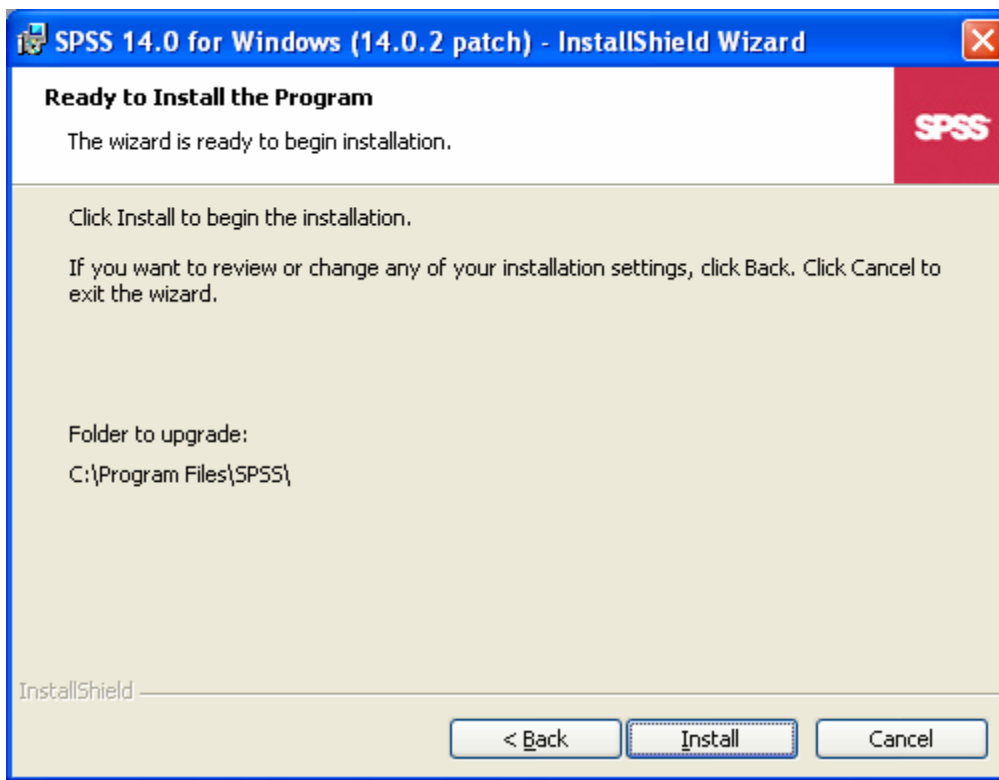
It should start loading the software



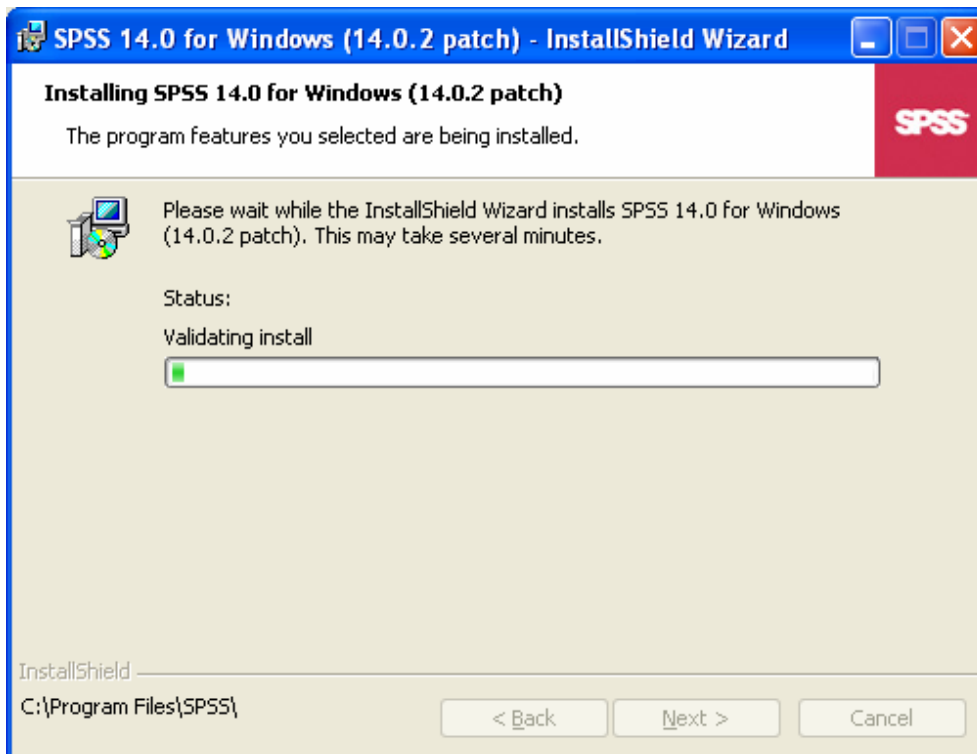
After it finishes loading you will see this box, then click "**Next.**"



Click on **“Install”**



You will see this box while it installs the Service Pack in your computer.



❖ *Note that if you do not apply the service pack, all the files that you open on SPSS 14 will have records missing. Please make sure that you apply the patch once you have successfully installed and licensed your SPSS program.*

